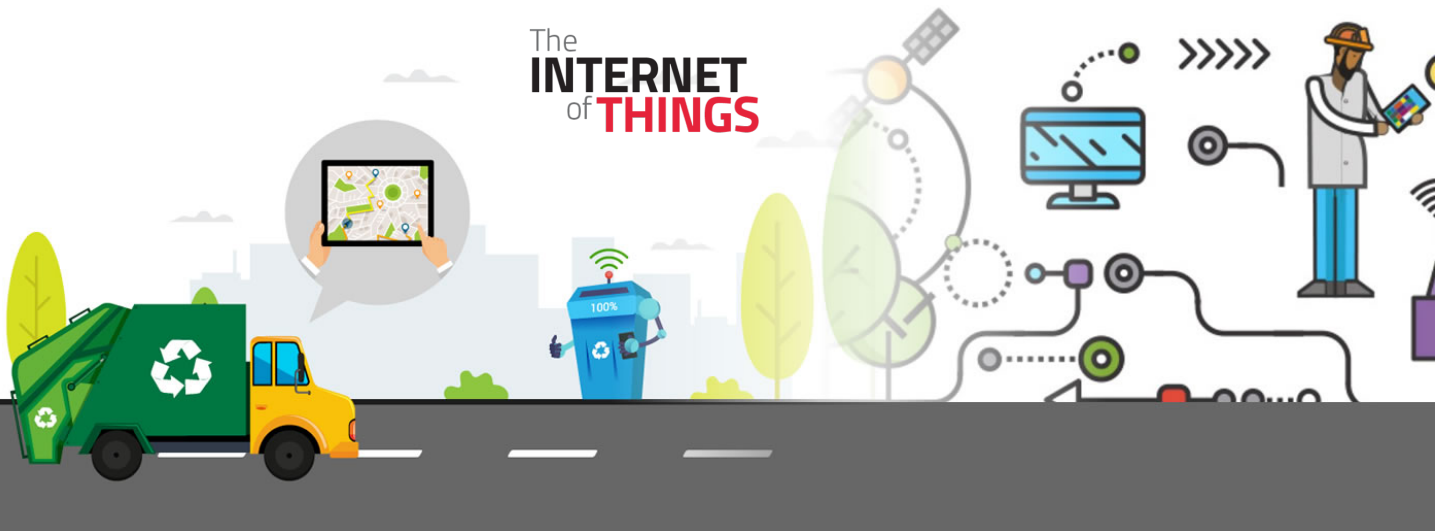


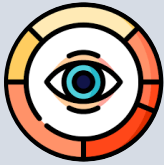
iZeeSYNC

IoT Device Management Platform

Device management, data collection, processing and visualization for your IoT Solution. It enables device connectivity via industry standard IoT protocols – MQTT, HTTP and SDK supporting both cloud and on-premises deployment.

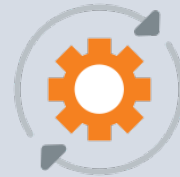


The
INTERNET
of **THINGS**



TELEMETRY DATA COLLECTION

Collect and store telemetry data in reliable way, surviving network and hardware failures. Access collected data using customizable web dashboards or server-side APIs.



ASSET MANAGEMENT

Provides ability to register and manage assets. Allows to provision server-side asset attributes and monitor related alarms. Ability generate reports of active and non active assets.



DEVICE MANAGEMENT

Provides ability to register and manage devices. Allows to monitor client-side and provision server-side device attributes. Provide API for server-side applications to send RPC commands to device and vice-versa.



ALARMS MANAGEMENT

Provides ability to create and manage alarms related to your entities, devices, assets, customers, etc. Allows real-time alarms monitoring and alarms propagation to related entities hierarchy. Raise alarms on device disconnect or inactivity events.